

new Work.



GET FLOORED COLLECTION



gUltron^{SOLUTION 6.6}
doc award winner

A modern interpretation of classic designs.

With saturated colors and stunning visual appeal, the Get Floored collection offers sophisticated styles of incredible depth and dimension.

MANNINGTON
COMMERCIAL

specifications

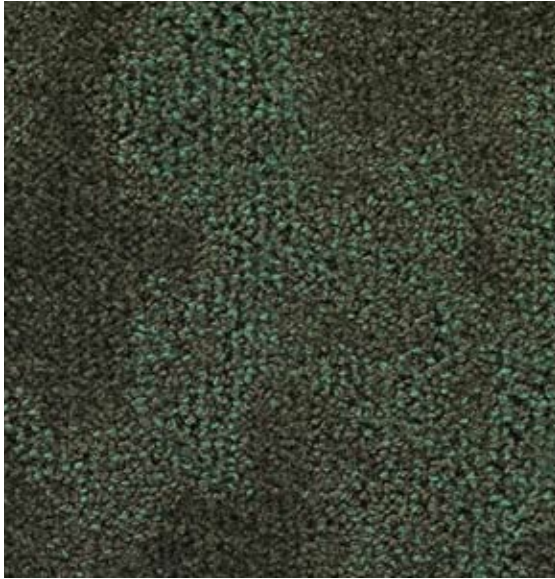
TIE-DYE / LAVA LAMP / GRAFFITI

Ultron® Nylon 6,6 Premium Branded Fiber
ISO 14001 registered manufacturing
Meets CRI Green Label Plus

Infinity® Modular

- Impearmearable moisture barrier
- Eliminates wick-back staining
- Superior tuftbind wet and dry
- Superior dimensional stability
- Contains pre-consumer recycled content
- Passes British spill test
- Available in 24" X 24" carpet tile
- Tie-Dye - monolithic, brick ashlar and vertical ashlar installation methods
- Graffiti and Lava Lamp - monolithic and brick ashlar installation methods
- Limited Lifetime Wear and Backing Warranty

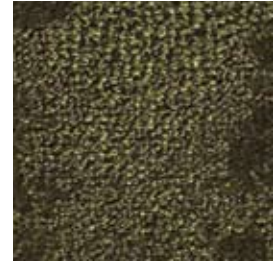
TIE-DYE FEATURED all colors available in all three patterns



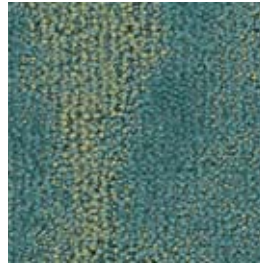
aleenta



capri



aura



bahia



punta mita



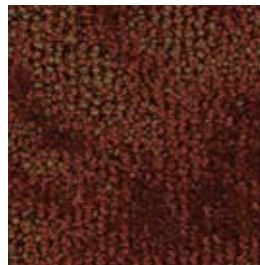
carlot



ceylon



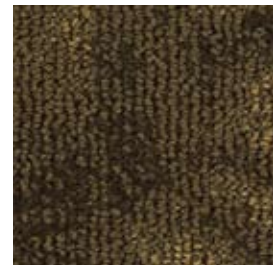
creole



habanero



kapalua



terrain



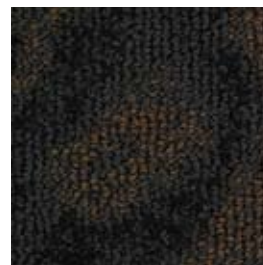
mykonos



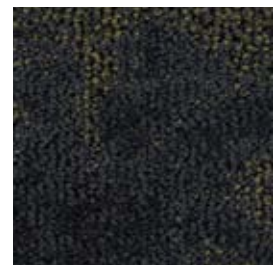
ermine



oceanic



carbon



balboa

ManningtonWorks.

800 241 2262 manningtoncommercial.com

MANNINGTON
COMMERCIAL